

## 9F Loco Body

### BUILD INSTRUCTIONS BR Std 9F 2-10-0

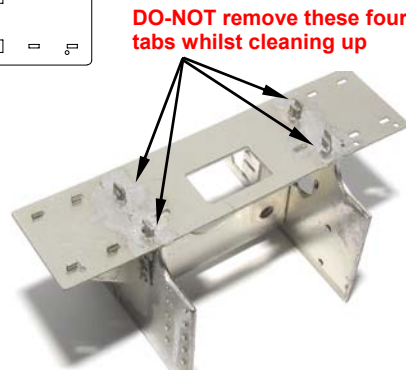
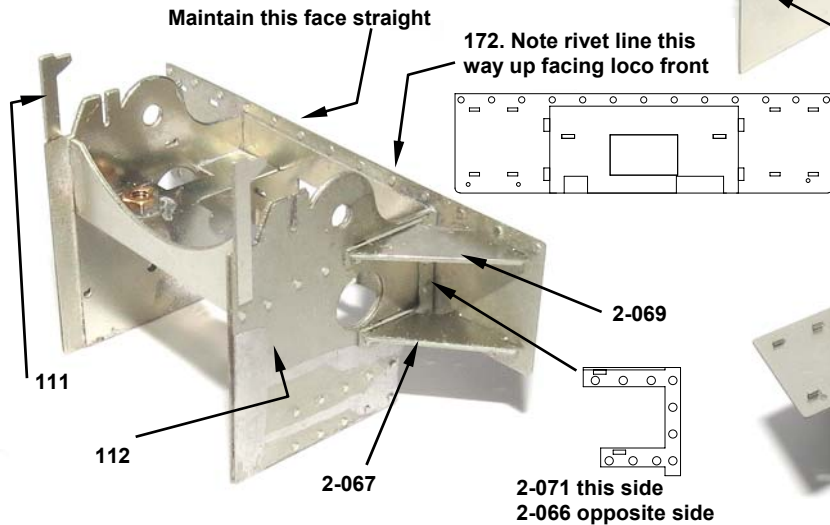
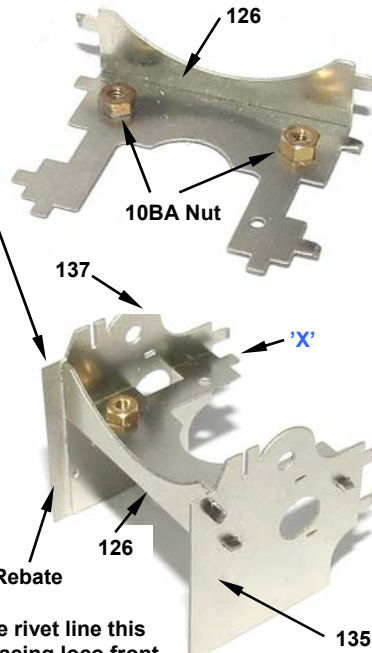
Nov 2016

Loco Body etched part numbers are prefixed with the sheet number ie (1- or 2 -) followed by part no. eg (1- 002) Cast parts are prefixed with pack number eg Pkt 1/002

Locate the under-cab section of the chassis parts from the **CHASSIS etch sheet 1** 111, 112, 135, 137, 126 and 172. Solder 2 off 10BA nuts to the etched pockets in 126. Ensure threads remain free from solder. Fold up the flange on 126 at 90 degs.

Assemble 126 to the chassis sides 135 and 137. Twist tabs to retain. **IMPORTANT Rebated side to be assembled on the inside as shown**

Locate also parts from the **BODY etch sheet 2** 172, 2-067x2, 2-069x2, 2-066 and 2-071. Assemble 172 to 126 etc and loosely twist tabs only marked 'X' **Ensure 172 is oriented as shown below.** Assemble the chassis side overlays 111 and 112 together with the above body parts. Ensure registered with underlying part. Twist tabs lightly to retain and solder. Ensure that 172 remain straight across the back and is not deflected by the body parts 2-069 and 2-067. **Remove tabs for 2-069 and 2-067 ONLY.** Maintain back face of 172 flat and smooth to accept a mating part later. Test assemble to the chassis.



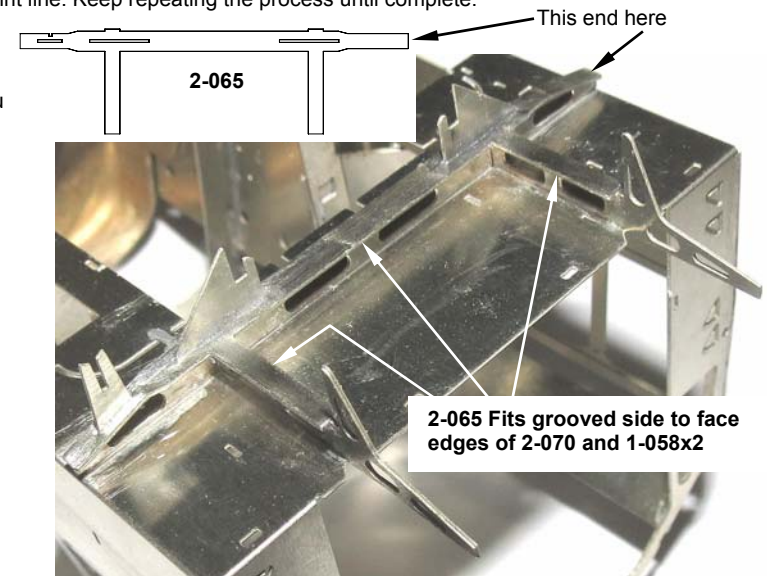
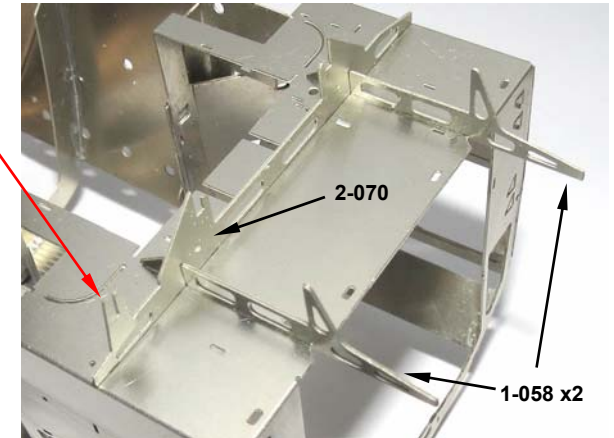
Locate from the **BODY etch Part 1** 1-058x2 and from **Body etch sheet 2** 2-070 and 2-087. Assemble to the underside of the cab body as shown, parts 1-058x2 first. **Note orientation of 2/070 - this fork here**

Twist tabs on the inside of the cab to retain. Ensure all parts are tight to the underside of the body before soldering. Remove excess tabs and solder from the inside. Handling needs to be watched from now on until the floor is in place to prevent damage to the projecting parts 1-058.

Locate Flange 2-065. Form and carefully fit to the under body parts 1-058 and 2-070 just fitted. Note the orientation. Ensure the part assembles snugly and sits flat. Solder in place.

For those fortunate enough to own a Resistance Soldering Unit and using paste solders this will be easy. For the rest of us the best way is to flux liberally and feed solder to the joint where the blades project through. Move the iron tip along the surface and the solder will chase the heat source following along the underside side joint line. Keep repeating the process until complete.

There will be some solder to clean off from the top surface but should be a minimum provided that you don't over feed.





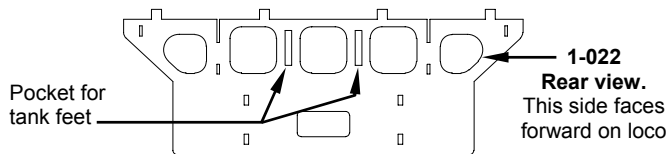
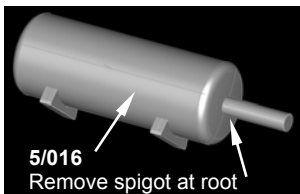
## 9F Loco Body

BUILD INSTRUCTIONS BR Std 9F 2-10-0

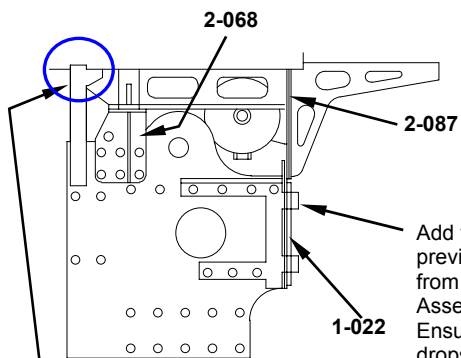
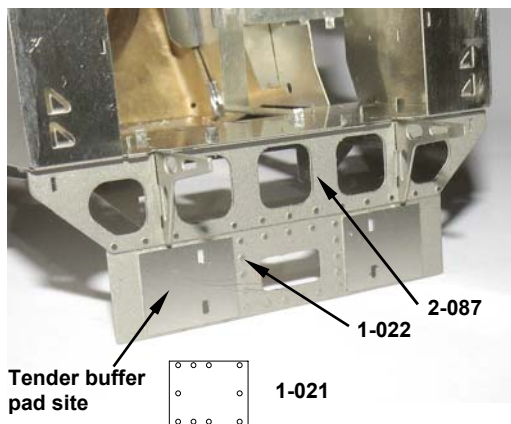
Nov 2016

Loco Body etched part numbers are prefixed with the sheet number ie (1- or 2 -) followed by part no. eg (1- 002) Cast parts are prefixed with pack number eg Pkt 1/002

For **NON Consett** models locate and prepare the **Brake Vac Tank Pkt 5/016** and assemble to the etched recess in **1-022**. Solder in place.



Assemble **1-022** and **2-087** together to the underside of the cab floor as shown to the right. Both items occupy the same slots in the cab floor. Twist tabs to allow movement, not tight. Disassemble **DO-NOT** solder.

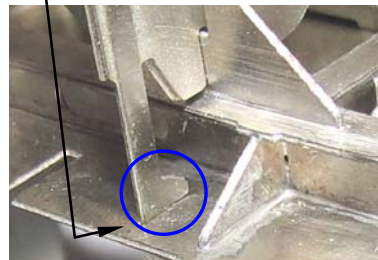


Add the under-cab chassis section constructed on the previous page. It will be necessary to straighten the tabs from the previous twist imparted during construction. Assemble the parts then re-twist these tabs to secure. Ensure all parts are fully seated and that the front strut's drops into their slots (**shown in Blue circle**)

Ensure both **1-022** & **2-087** are tight under the cab footplate before twisting to retain. Solder all parts.

Locate the detail overlays **2-068** these are assembled with another part, see following page for instructions.

Remove excess tabs and solder. Solder or glue buffing pads **1-021 x2**. Chamfer all edges of **1-021** prior to fitting. Ensure registered over the pad site.



To protect the floor supports from any potential handling damage assemble the floor overlay next.

Locate the cab floor overlay **BODY Sheet 2 2-063**.

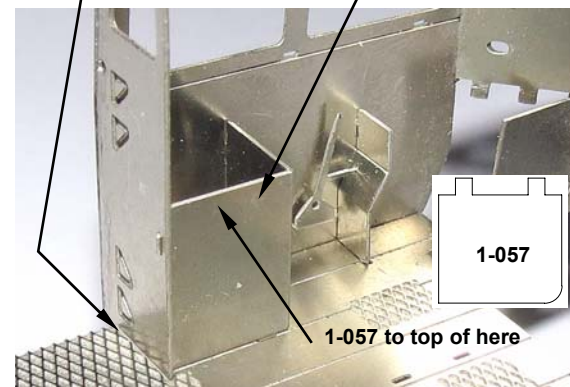
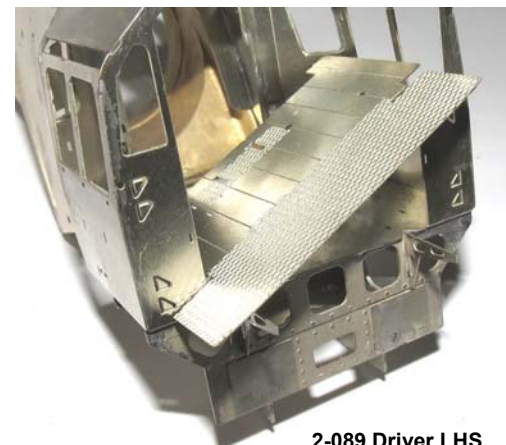
Ensure the floor space inside the cab is clear of excess tabs and solder such that the floor overlay will lay flat. The only 2 tabs not accessible to file flat are the pair directly behind the cab rear wall in either corner. The cut-outs in the floor accommodate these. Make sure the floor supports projecting from the rear have not become deformed.

Assemble the floor overlay left side leading as shown, access through the roof.

Ensure the floor overlay will lie flat but **DO-NOT** solder yet

Locate the cab seat bases **2-089** and **2-090**. Fold at 90 degs and assemble to the cab interior. Twist tabs to retain.

Locate **2-079** and **2-078**, fold to shape. Assemble to the cab LHS wall as shown below. **2-079** is best assembled first. Twist tabs to retain and solder. Remove excess tabs and solder.



Locate the cab seat bases **2-089** and **2-090**. Fold at 90 degs and assemble to the cab interior. Twist tabs to retain. (Floor tab first, back tab and then side tab). Solder all parts. **Ensure cab floor is seated to the REAR of the cab as far as possible leaving a gap behind the outside rear wall.** Remove excess tabs and solder.

Locate seat covers **1-057** and **1-057A**. Assemble to the top of the seat base a, twist tabs to retain, solder and cleanup (not illustrated). **Note rebate on 1-057& 1-057A face the underside**

